

2011 W.D. SCHOCK MEMORIAL REGATTA

Ocean Course Sailing Instructions

March 5-6, 2011



1. RULES

The regatta will be governed by the *rules* as defined in the Racing Rules of Sailing.

2. NOTICES TO COMPETITORS

- 2.1. Notices to competitors will be located on the official notice board, located in the main hallway at NHYC and on the online notice board (www.nhyc.org).
- 2.2. Any changes to the sailing instructions will be posted before 0900 on the day it will take effect, except that any change to the schedule of races will be posted by 2000 on the day before it will take effect.
- 2.3. Flag 'L' over the numeral pennant of the most recent amendment will be displayed ashore.
- 2.4. Signals made ashore will be displayed from the race committee vessel *Jim Webster*.

3. SCHEDULE OF RACES

- 3.1. The first warning signal will be given at 1200 for all days of racing.
- 3.2. Six (6) races are scheduled.
- 3.3. The race committee (R/C) reserves the right to run additional or fewer races each day depending on its judgment of the weather and the best interests of the regatta.
- 3.4. No warning signal will be made after 1600 on the last day of racing.
- 3.5. The display of code flag "H" (white and red vertical bars) at the finish of any race means, "Racing has ended for the day."

4. CLASS FLAG

The Class Flag will be a white field with a Schock 35 insignia.

5. RACE AREA/ THE COURSES

- 5.1. The races will be sailed in the Pacific Ocean off Newport Beach, CA.
- 5.2. The racing area will be located approximately 0.5 miles west of the Newport Pier. The R/C may choose to move this area at its discretion.
- 5.3. The diagram in Figure 1 shows the courses to be sailed and the order in which marks are to be rounded or passed.
- 5.4. The number of the course to be sailed will be displayed from the R/C signal boat no later than the warning signal for the next starting class.
- 5.5. No later than the warning signal, the R/C signal boat will display the approximate compass bearing of the first leg.
- 5.6. If the R/C sets a gate instead of Mark 2, boats shall sail between Mark 2s and Mark 2p from the direction of the last mark and round either Mark 2s to starboard or Mark 2p to port, as shown in Figure 1.

6. MARKS

- 6.1. All *marks* of the course will be RED inflatable cones.
- 6.2. New *marks*, as provided in SI 10, CHANGE OF THE POSITION OF THE NEXT MARK, will have a black cap.
- 6.3. The start/finish *mark* will be a YELLOW inflatable cone approximately to port of the R/C signal boat.

7. CHECK-IN/RETIREMENT

- 7.1. Before the first warning signal for the first race each day, each boat shall: 1) sail past the R/C signal boat on starboard tack; 2) announce her sail number; 3) obtain the recognition of her sail number by the R/C. A boat failing to do so may be subject to *protest* by the R/C.
- 7.2. A boat that retires from a race is asked to notify the R/C before leaving the race area. If that is impossible, then immediately after arriving ashore, the competitor shall notify a regatta representative.

8. START/FINISH

- 8.1. The start/finish line will be a straight line between the course side of the start/finish *mark* and a staff with an orange flag on the R/C signal boat.
- 8.2. Races will be started using RRS 26.
- 8.3. Three (3) boats will constitute a class entitled to a separate start. Upon elimination of a class start, the starting times of succeeding classes will advance accordingly. Competitors must be alert for the display of their class indicator at the warning signal for each race.
- 8.4. Boats whose warning signal has not been made shall avoid the starting area and *keep clear* of boats *starting* and *finishing*.
- 8.5. The start/finish line *marks* are not marks of the course except when *starting* or *finishing*.

9. RECALLS

- 9.1. Recalls will be signaled from the R/C signal boat.
- 9.2. As a courtesy to competitors, the R/C signal boat will attempt to hail the sail numbers of OCS boats after the starting signal by loud hailer and/or VHF radio. See SI 15, RADIO COMMUNICATION.
- 9.3. Failure to make a hail or failure to hear it shall not be grounds for granting redress. This changes RRS 62.1(a).

10. CHANGE OF THE POSITION OF THE NEXT MARK

To change the position of the next *mark*, the R/C will lay a new *mark* (or move the finishing line) and remove the original *mark* as soon as practicable. The change will be signaled before the leading boat has begun the leg, although the new *mark* may not yet be in position. Any *mark* to be rounded after rounding the new *mark* may be relocated without further signaling to maintain the course configuration. When in a subsequent change a new *mark* is replaced, it will be replaced by an original *mark*.

11. TIME LIMIT

- 11.1. The time limit will be ninety (90) minutes for the first boat to *finish* in each race.
- 11.2. Boats failing to finish within fifteen (15) minutes after the first boat sails the course and *finishes* will be scored Did Not Finish (DNF). This changes RRS 35 and RRS A4.
- 11.3. If a boat in last place is delaying the next start, the R/C may order the race terminated and score that boat points equal to last place.

12. PROTESTS

- 12.1. RRS 61.1 is changed by adding this sentence: "When a boat intends to protest she shall notify the R/C at the finishing line and inform the R/C."
- 12.2. *Protests* shall be written on forms available at the Protest Desk located in the Trophy Room at NHYC and shall be delivered to the Protest Desk no later than thirty (30) minutes after the R/C boat has returned to the dock. That time will be posted.
- 12.3. *Protests* will be heard as soon as possible, in the order determined by the protest committee.
- 12.4. It is the sole responsibility of each boat involved to be ready and have witnesses available when the hearing is called.
- 12.5. RRS 66 is changed by adding this sentence: "On the last day of racing, a party to the hearing may ask for a reopening no later than thirty (30) minutes after being informed of the decision."

13. SCORING

- 13.1. Two (2) races are required to be completed to constitute a series.
- 14.2. When fewer than five (5) races have been completed, a boat's series score will be the total of her race scores.

14. HAUL OUT RESTRICTIONS

All Schock 35 boats shall not be hauled out during the regatta, except with—and according to the terms of—prior written permission of the R/C.

15. RADIO COMMUNICATION

- 15.1. A boat shall neither make radio transmissions while racing, nor receive radio communications not available to all boats. This restriction also applies to mobile telephones and text messaging devices.
- 15.2. For the purposes of supplementing communication with racers, the R/C will use VHF channel 71.

16. TROPHIES

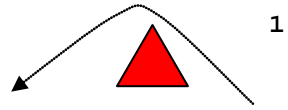
Trophies will be awarded based on the number of entries in each class. Trophies will be awarded as soon as possible after the last race on Sunday, March 6, 2011.

17. DISCLAIMER OF LIABILITY

Sailing is an activity that has an inherent risk of damage and injury. Competitors in this race are participating entirely at their own risk. See RRS 4, Decision to Race. The race organizers (organizing authority, ratings authority, race committee, protest committee, host club, sponsors, or any other organization or official) will not be responsible for damage to any boat or other property or the injury to any competitor, including death, sustained as a result of participation in this race. By participating in this race, each competitor agrees to release the race organizers from any and all liability associated with such competitor's participation in this event to the fullest extent permitted by law.

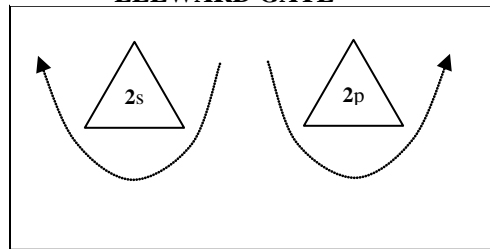
* * *

FIGURE 1, COURSES



No.	Course
1	Start-1-O-Finish
2	Start-1-O-2-1-O-Finish
3	Start-1-O-2-1-O-2-1-O-Finish
4	Start-1-O-2-1-O-2-1-O-2-1-O-Finish

LEEWARD GATE



NOTE: Not to scale

