



# 2013 Spring Gold Cup

## SAILING INSTRUCTIONS

### Sabot A, B, C2: Race Venue 1

### March 16-17, 2013



#### 1 RULES

- 1.1 The regatta will be governed by the *rules* as defined in the Racing Rules of Sailing, including US Sailing Prescription T, Section C.
- 1.2 Competitors shall wear USCG-approved PFD's at all times while on the water, other than during brief periods while adding or removing clothing. The race committee ("R/C") will not fly the 'Y' flag. This modifies RRS 40 and the preamble to Part 4.

#### 2 NOTICE TO COMPETITORS

- 2.1 Notices to competitors will be posted online and on the official notice board located on the window next to the Flag Deck.

#### 3 CHANGES TO SAILING INSTRUCTIONS

The R/C will post any change in the sailing instructions not fewer than thirty (30) minutes before it will take effect, except that any change to the schedule of races will be made by 2000h on the day before it will take effect.

#### 4 SIGNALS MADE ASHORE

- 4.1 Signals made ashore will be displayed on the flag pole located at the top of the main dock gangway.
- 4.2 A class flag with one sound means "The warning signal will be made not less than 15 minutes after the class flag is displayed" for that class. Boats are requested not to leave the dock until this signal is made.
- 4.3 Flag "L" over a numeral pennant displayed ashore will signal the most recent amendment.

#### 5 SCHEDULE OF RACES

- 5.1 The C2 class flag will not be displayed ashore before 10:15 am for both race days.
- 5.2 The A & B class flags will not be displayed ashore before 1:15 pm for both race days.

#### 6 FORMAT OF RACES

{RESERVED}

#### 7 COURSES

- 7.1 The diagrams in Appendix A show the courses, including the approximate angle between the legs, the order in which marks are to be passed, and the side on which each mark is to be left. Except at a gate, a boat shall leave each rounding mark to port. The R/C will verbally announce the course description for a race from the R/C signal boat before the warning signal for that race.
- 7.2 The letter "G" displayed with any course number means that a gate will replace Mark 3.

#### 8 MARKS

- 8.1 See Appendix A, Table 2 for detailed descriptions of the marks.
- 8.2 The start and finish line *marks* are not *marks* of the course except when *starting or finishing*.
- 8.3 Moored boats rank as *obstructions*. Moored boats and their mooring balls and lines shall not be touched in any way. A boat may not protest for an alleged breach of this SI. This changes RRS 60.1.

#### 9 START/FINISH

- 9.1 All races will be started using RRS, US Sailing Prescription Appendix S.

- 9.2 The start line will be a straight line between the course side of a staff with an orange flag on the R/C signal boat at the starboard end and the course side of the nearby inflatable starting *mark* at the port end.
- 9.3 The finish line will be a straight line between the course side of a staff with an orange flag on the R/C signal boat and the course side of the nearby inflatable finishing *mark*.

## 10 EQUIPMENT CHECK

If a "Sabot A" boat is one of the first five finishers in a race, after *finishing*, she shall proceed directly to the R/C boat displaying the code flag "F" (red diamond on a white field) for inspection of INSA-required equipment.

## 11 TIME LIMIT AND TARGET TIMES

- 11.1 The time limit for the first boat in each class to finish will be forty-five (45) minutes.
- 11.2 A boat that fails to *finish* within fifteen (15) minutes after the first boat in her class sails the course and *finishes* will be scored Time Limit Expired ("TLE") without a hearing. In such case, the R/C may terminate the race and score the boat points equal to the number of boats *finishing* plus two (2). This changes RRS 35, A4, A5, and A11.

## 12 CHECK-OUT

A boat that retires from a race shall notify an R/C boat before leaving the race area. If that is impossible, then immediately after arriving ashore, the competitor shall notify a regatta representative.

## 13 PROTESTS

- 13.1 RRS 61.1(a) is changed by adding this sentence before the word "However": "She shall also notify the R/C at the finish line as soon as practicable after she *finishes*."
- 13.2 A boat may not protest for an alleged breach of SI 1.2 or 12, or for an alleged breach of a class rule requiring class membership. Associated penalties for such breaches, if any, shall be at the discretion of the protest committee ("P/C"). The scoring abbreviation for a discretionary penalty imposed under this instruction will be DPI. This changes RRS 60.1, 64.1(a), and A11.
- 13.3 A *party* shall submit a protest or request for redress in writing on a form available at the protest desk located in the trophy room at NHYC. Regarding an incident observed in the racing area, a boat, the race committee, or the protest committee shall deliver a completed form to the protest desk no later than thirty (30) minutes after the last finish in the class' last race of the day. That time will be posted. This constitutes the time limit mentioned in the first sentence of RRS 61.3.
- 13.4 The P/C will hear protests as soon as possible and in the order it determines. The hearing schedule will be posted on the notice board and at the protest desk no later than 10 minutes after the close of protest time. This posting will constitute the notification required by RRS 63.2.
- 13.5 Notice of any other protest by the race committee or protest committee will also be posted. This will constitute the notification required under 61.1(b).
- 13.6 Only the skipper may represent a boat in a hearing. No coach or other person may represent a boat or file a protest on her behalf. This changes RRS 63.3.
- 13.7 It is the sole responsibility of each boat involved to be ready and have witnesses available when the hearing is called.
- 13.8 If the R/C posts a list of boats scored OCS, ZFP, or BFD on the official notice board before the protest time limit, a request for redress based on such a posted score shall be made no later than one (1) hour after the protest time limit. This changes the first sentence of RRS 62.2.
- 13.9 On the last scheduled day of racing, a party to the hearing shall deliver a request for reopening a hearing or a request for redress based on a protest committee decision no later than thirty (30) minutes after being informed of the decision. This changes RRS 62.2 and 66.

## 14 SUPPORT BOATS

Team leaders, coaches and other support personnel (including family members) shall stay outside areas where boats are racing from the time of the preparatory signal until all boats have finished, or until the R/C signals a postponement, general recall or abandonment. Any penalty associated with this SI shall apply to the boat(s) associated with the support boat in question. This SI shall not apply to any support boat (or her associated competitors) that the R/C has directed to help a boat or competitor that is in danger while *racing*.

## 15 SCORING

15.1 Three (3) completed races shall constitute a series.

15.2 When five (5) or fewer races have been completed, a boat's series score shall be the total of her race scores, with no score excluded. When more than five (5) races have been completed, a boat's series score shall be the total of her race scores, excluding her worst score.

## 16 TROPHIES

The O/A will present trophies as soon as possible after the conclusion of racing on Sunday, March 17<sup>th</sup>.

## 17 DISCLAIMER

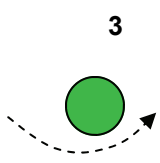
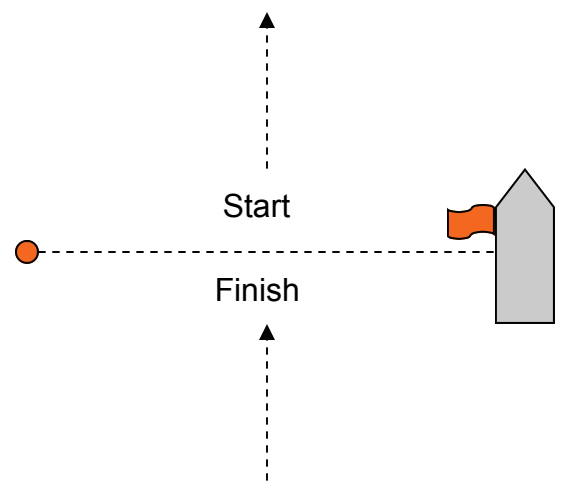
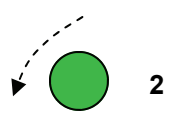
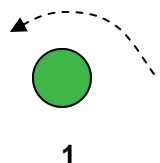
Sailing is an activity that has an inherent risk of damage and injury. Competitors in this race participate entirely at their own risk. See RRS 4, Decision to Race. The race organizers (O/A, R/C, P/C, host club, sponsors, or any other organization or official) will not be responsible for damage to any boat or other property or the injury to any competitor, including death, sustained as a result of participation in this race. By participating in this race, each competitor agrees to release the race organizers from any and all liability associated with such competitor's participation in this event to the fullest extent permitted by law.

Appendix A: Course Descriptions

# # END # #

# 2013 W.D. Schock Memorial Regatta

## Appendix A: Course Diagrams and Descriptions



NOTE: **NOT** to scale

**Table 1: Course Descriptions**

No.	Course
1	Start—1—3—Finish
2	Start—1—3—1—3—Finish
3	Start—1—2—3—Finish
4	Start—1—2—3—1—3—Finish

**Table 2: Mark Descriptions**

Marks	Description
<i>Start marks</i>	
Starboard end	R/C boat displaying orange flag
Port end	Orange, Inflatable ball
<i>Rounding marks</i>	
1, 2, 3 (3s/3p)	Green, inflatable cylinder
<i>Finish marks</i>	
Starboard end	R/C boat displaying orange flag
Port end	Orange, inflatable ball

