



# FALL GOLD CUP REGATTA

## RACE VENUE: 1 & 2

### September 7-8, 2013

## SAILING INSTRUCTIONS



### 1 RULES

- 1.1 The regatta will be governed by the rules as defined in the Racing Rules of Sailing.
- 1.2 US Sailing Prescriptions 60, 62.3, and 63.4 are deleted.

### 2 NOTICE TO COMPETITORS

Notices to competitors will be the official notice board located on the window next to the Flag Deck.

### 3 SIGNALS MADE ASHORE

- 3.1 Signals made ashore will be displayed on the flag pole located at the top of the main dock gangway.
- 3.2 A class flag with one sound means "The warning signal will be made not less than 15 minutes after the class flag is displayed" for that class. Boats are requested not to leave the dock until this signal is made.
- 3.3 Flag "L" over a numeral pennant displayed ashore will signal the most recent amendment.

### 4 CHANGES TO SAILING INSTRUCTIONS

The RC will post any change in the sailing instructions not fewer than thirty (30) minutes before it will take effect, except that any change to the schedule of races will be made by 2000h on the day before it will take effect.

### 5 SAFETY AND PERSONAL EQUIPMENT

- 5.1 RRS 40 and preamble to Part 4 is changed to require competitors to wear US Coast Guard (USCG) approved Type III or V Personal floatation Device (PFD), inherently buoyant (i.e. no inflatable) while on the water, except for brief periods while changing clothing.
- 5.2 A boat that retires from a race shall notify an RC boat before leaving the race area. If that is impossible, then immediately after arriving ashore, the competitor shall notify a regatta representative.

### 6 SCHEDULE OF EVENTS

Fleet	Race Venue	Boat Launch Window*	Competitors' Meeting	First Warning Signal
		Saturday & Sunday	Saturday Only	Saturday & Sunday
C3	2	9:30am – 11am	10:30 am	11:00 am
C2	1	9:30am – 11am	10:30 am	11:00 am
C1	2	11am - 12:45pm	12:45 pm	not before 1:15 pm
B	1	11am - 12:45pm	12:45 pm	not before 1:15 pm
A	1	11am - 12:45pm	12:45 pm	not before 1:15 pm

\*Launch Windows: In order to efficiently manage the boatyard, competitors are required to adhere to the launching schedule listed below. *Thank you for your cooperation in advance.*

### 7 FORMAT OF RACES

{RESERVED}

### 8 RACING AREA

- 8.1 Race Venue 1: Harbor north of the NHYC main dock.  
Race Venue 2: Lido Channel

## 9 COURSES

- 9.1 Appendix 1 includes the course descriptions for Race Venue 1.  
Appendix 2 includes the course descriptions for Race Venue 2.
- 9.2 The RC will verbally announce and or/display the course description for a race from the RC signal boat before the warning signal for that race.
- 9.3 The letter "G" announced and/or displayed with any course description means that a gate will replace Mark 3.

## 10 MARKS

- 10.1 A detailed description of the marks for each race venue is detailed in the applicable appendix.
- 10.2 The start and finish line *marks* are not *marks* of the course except when *starting* or *finishing*.
- 10.3 Moored boats rank as *obstructions*. Moored boats and their mooring balls and lines shall not be touched in any way. A boat may not protest for an alleged breach of this SI. This changes RRS 60.1.

## 11 START/FINISH

- 11.1 All races will be started using RRS, US Sailing Prescription Appendix S.
- 11.2 The start line will be a straight line between the course side of a staff with an orange flag on the R/C signal boat at the starboard end and the course side of the nearby inflatable starting *mark* at the port end.
- 11.3 The finish line will be a straight line between the course side of a staff with an orange flag on the RC signal boat and the course side of the nearby inflatable finishing *mark*.

## 12 EQUIPMENT CHECK

The following applies to the Sabot A class only:

After *finishing*, the first five finishers in race, she shall proceed directly to the RC boat displaying the code flag "F" (red diamond on a white field) for inspection of INSA-required equipment.

## 13 TIME LIMIT

- 13.1 The time limit for the first boat in each class to finish will be forty-five (45) minutes.
- 13.2 A boat that fails to *finish* within fifteen (15) minutes after the first boat in her class sails the course and *finishes* will be scored Time Limit Expired ("TLE") without a hearing. In such case, the RC may terminate the race and score the boat points equal to the number of boats *finishing* plus two (2). This changes RRS 35, A4, A5, and A11.

## 14 PROTESTS

- 14.1 RRS 60.1 (a) is changed to prohibit a boat from protesting another boat for an alleged breach of any class rules other than class equipment measurements rules.
- 14.2 RRS 60.3 is changed to permit the protest committee to protest a boat when, from its own observation or a report received from any source, it believes a competitor may have committed a breach of good manners, or sportsmanship, or may have brought the sport or the event into disrepute.
- 14.3 Protest must be submitted in writing, on forms available at the Protest Deck, located in the Trophy Room of NYHC. Protests shall be delivered there within the protest time limit
- 14.4 Protests must be delivered within thirty (30) minutes after the last finisher in the class's last race of the day. The protest time limit will be posted on the Official Notice Board. The same protest time limit applies to all protests by the race committee and jury about incidents they observe in the racing area and to request for redress. This changes RRS 61.3 and 62.2.
- 14.5 The protest committee will hear protests as soon as possible and in the order it determines. The hearing schedule will be posted on the notice board and at the protest desk no later than 10 minutes after the close of protest time. This posting will constitute the notification required by RRS 63.2.
- 14.6 Only the skipper may represent a boat in a hearing. No coach or other person may represent a boat or file a protest on her behalf. This changes RRS 63.3(a).

- 14.7 It is the sole responsibility of each boat involved to be ready and have witnesses available when the hearing is called.
- 14.8 If the RC posts a list of boats scored OCS, ZFP, or BFD on the official notice board before the protest time limit, a request for redress based on such a posted score shall be made no later than one (1) hour after the protest time limit. This changes the first sentence of RRS 62.2.
- 14.9 On the last day of racing a request for reopening a hearing shall be delivered:
- a) within the protest time limit if the party requesting reopening was informed of the decision on the previous day;
  - b) within the protest time limit, or thirty (30) minutes after the decision is announced, whichever is later.
- This changes RRS 62.2 and 66.

## 15 SUPPORT BOATS

Team leaders, coaches and other support personnel (including family members) shall stay outside areas where boats are racing from the time of the preparatory signal until all boats have finished, or until the RC signals a postponement, general recall or abandonment. Any penalty associated with this SI shall apply to the boat(s) associated with the support boat in question. This SI shall not apply to any support boat (or her associated competitors) that the RC has directed to help a boat or competitor that is in danger while racing.

## 16 SCORING

- 16.1 Three (3) completed races shall constitute a series.
- 16.2 When five (5) or fewer races have been completed, a boat's series score shall be the total of her race scores, with no score excluded. When more than five (5) races have been completed, a boat's series score shall be the total of her race scores, excluding her worst score.

## 17 TROPHIES

The O/A will present trophies as soon as possible after the conclusion of racing on Sunday, September 8<sup>th</sup>.

## 18 DISCLAIMER

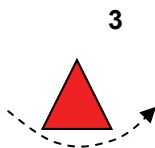
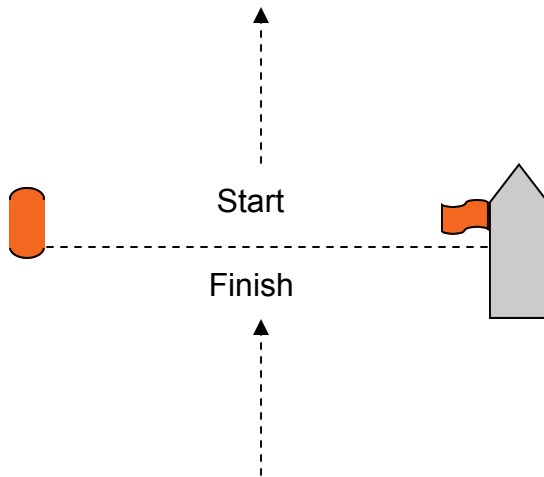
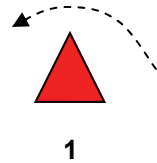
Sailing is an activity that has an inherent risk of damage and injury. Competitors in this race participate entirely at their own risk. See RRS 4, Decision to Race. The race organizers (OA, RC, PC, host club, sponsors, or any other organization or official) will not be responsible for damage to any boat or other property or the injury to any competitor, including death, sustained as a result of participation in this race. By participating in this race, each competitor agrees to release the race organizers from any and all liability associated with such competitor's participation in this event to the fullest extent permitted by law.

Appendix 1: Course Descriptions for Race Venue 1

Appendix 2: Course Descriptions for Race Venue 2

# # END # #

2013 Fall Gold Cup  
 Appendix 1: Course Diagrams and Descriptions  
 Sabot A, B, C2: Race Venue 1



NOTE: **NOT** to scale

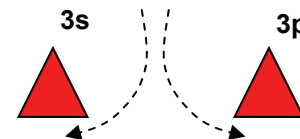
**Table 1: Course Descriptions**

No.	Course
1	Start—1—3—Finish
2	Start—1—3—1—3—Finish
3	Start—1—2—3—Finish
4	Start—1—2—3—1—3—Finish

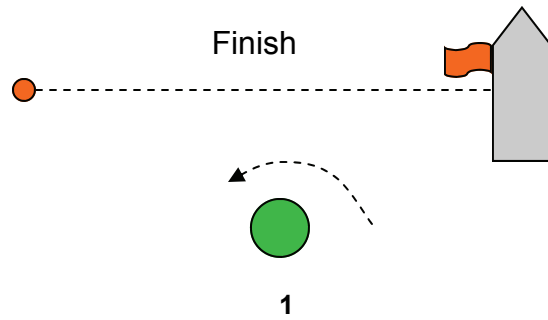
**Table 2: Mark Descriptions**

Marks	Description
<i>Start marks</i>	
Starboard end	R/C boat displaying orange flag
Port end	Orange, Inflatable cylinder
<i>Rounding marks</i>	
1, 2, 3 (3s/3p)	Red, inflatable cone
<i>Finish marks</i>	
Starboard end	R/C boat displaying orange flag
Port end	Orange, inflatable cylinder

**Figure 1: Leeward Gate**

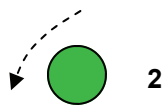


2013 Fall Gold Cup  
 Appendix 2: Course Diagrams and Descriptions  
 Sabot C1,C3: Race Venue 2



**Table 1: Course Descriptions**

No.	Course
1	Start—1—3—Finish
2	Start—1—3—1—3—Finish
3	Start—1—2—3—Finish
4	Start—1—2—3—1—3—Finish



**Table 2: Mark Descriptions**

Marks	Description
<i>Start marks</i>	
Starboard end	R/C boat displaying orange flag
Port end	Orange, Inflatable ball
<i>Rounding marks</i>	
1, 2, 3	Green, inflatable tetrahedron
<i>Finish marks</i>	
Starboard end	R/C boat displaying orange flag
Port end	Orange, inflatable cylinder

